

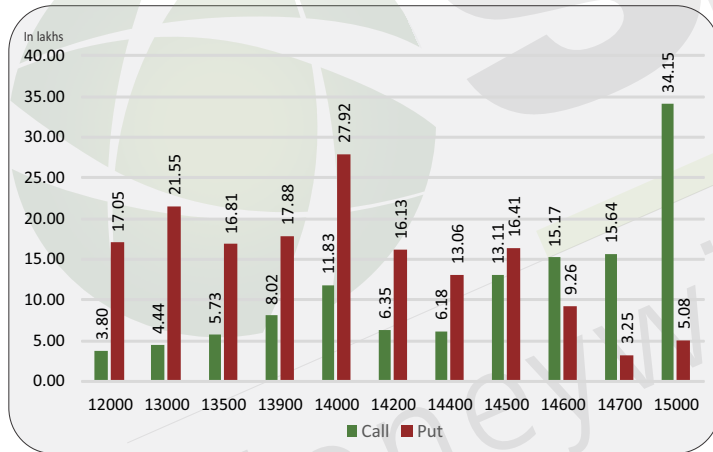
Index level

Index	Close	S1	S2	R1	R2
NIFTY	14645	14600	14550	14700	14750
BANKNIFTY	32585	32000	31740	33000	33340

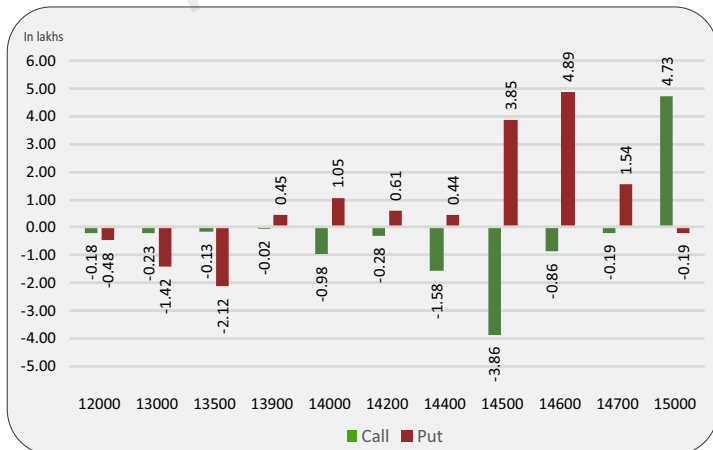
Nifty snapshot

	20-Jan	19-Jan
Nifty Spot	14644.70	14521.15
Nifty Jan	14645.15	14570.00
Nifty Feb	14683.20	14605.30
Chg. OI (Jan) (%)	3.57	-1.38
Chg. OI (Feb) (%)	14.76	15.48
50 Day SMA	13587	13542
100 Day SMA	12580	12549
200 Day SMA	11383	11350

Nifty option OI concentration



Nifty option OI change



Nifty outlook

SGX Nifty 14687 (+42)

Today the markets are likely to open on a positive note. All the emerging markets are trading in green. The coming session is likely to witness a range of 14600 on declines and 14700 on advances.

Stock is in ban period

IDEA, SAIL, SUNTV

Sentiment indicator

	20-Jan	19-Jan	18-Jan	15-Jan	14-Jan
NIFTY Discount/Premium	0.45	48.85	5.95	24.80	32.50
COST OF CARRY%	0.88	0.88	0.85	0.82	0.81
PCR(OI)	1.35	1.36	1.40	1.51	1.69
PCR(VOL)	1.22	1.25	1.15	1.27	1.43
A/D RATIO(Nifty 50)	1.82	15.33	0.09	0.17	1.33
A/D RATIO(All FO Stock)*	2.07	42.33	0.11	0.18	1.17
IMPLIED VOLATILITY	21.14	22.54	24.09	23.96	23.57
VIX	21.55	22.90	24.40	24.01	23.03
HISTORICAL VOLATILITY	28.88	28.94	28.9	28.92	28.95

*All Future Stock

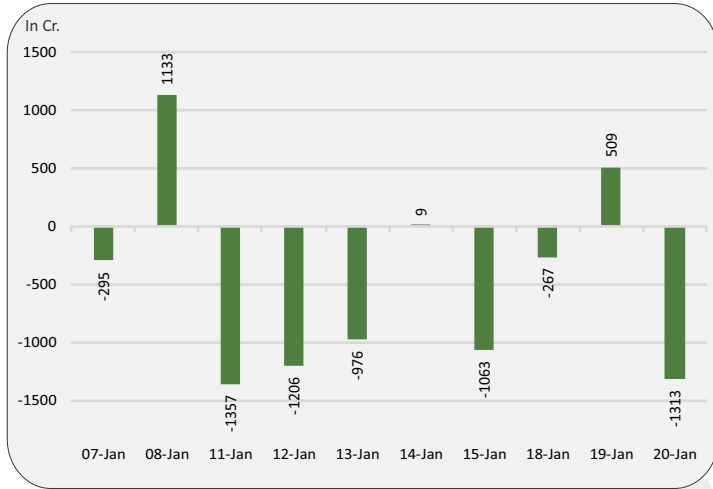
Nifty v/s OI

Date	Nifty	% Change	Open Interest	% Change
12-Jan	14598	0.8%	13891425	0.3%
13-Jan	14606	0.1%	13220925	-4.8%
14-Jan	14628	0.2%	13226850	0.0%
15-Jan	14459	-1.2%	12800925	-3.2%
18-Jan	14287	-1.2%	12187425	-4.8%
19-Jan	14570	2.0%	12018975	-1.4%
20-Jan	14645	0.5%	12448125	3.6%

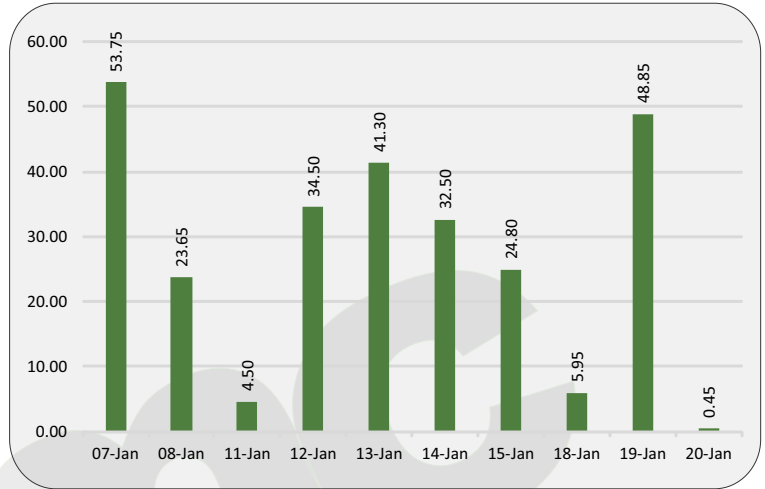
Fund flow (FII/DII)

	Net investment (in cr)
FII INDEX FUTURE	-1313
FII INDEX OPTION	-661
FII STOCK FUTURE	-333
FII STOCK OPTION	-42
FII CASH	2289
DII CASH	-865

FII'S activity in Nifty future



Nifty discount / premium



Top 10 long build up

	LTP	% Change	Open Interest	% OI Change
APOLLOTYRE	202.8	6.96%	13785000	14.02%
HAVELLS	1024.0	0.21%	4512000	8.93%
BANKBARODA	79.8	4.86%	53176500	7.04%
SRF	5891.1	0.67%	338625	5.94%
JINDALSTEL	306.2	3.18%	21800000	5.54%
MRF	93376.4	6.42%	61430	5.53%
FEDERALBNK	77.7	2.57%	97100000	4.37%
CANBK	142.5	2.33%	46045800	2.34%
PNB	37.2	1.23%	156064000	2.21%
INDIGO	1672.5	0.13%	3051000	1.24%

Indices to out perform

	Closing	% Change
AUTO	10369	2.29%
MIDCAP	6437	1.42%
METAL	3437	0.93%
IT	26620	2.21%
PSU BANK	1981	2.07%

Indices to under perform

	Closing	% Change
FMCG	34605	-0.16%
PHARMA	12881	0.12%
BANK	32544	0.37%
ENERGY	17596	0.44%
PSE	2953	-0.39%

Top 10 short build up

	LTP	% Change	Open Interest	% OI Change
TORNTPOWER	334.9	-1.59%	4386000	8.54%
MOTHERSUMI	158.9	-0.87%	28721000	6.02%
POWERGRID	196.9	-1.92%	18328000	5.36%
MCDOWELL-N	622.2	-1.52%	10546250	5.24%
SHREECEM	24021.9	-1.68%	163800	4.60%
INDUSTOWER	254.7	-1.66%	9847600	2.03%
IBULHSGFIN	226.7	-1.84%	28647100	1.91%
NTPC	98.6	-1.35%	73712400	1.89%
TVSMOTOR	511.3	-0.48%	5027400	1.67%
BRITANNIA	3602.9	-0.40%	2180200	1.59%

Stocks to out perform

	Closing	% Change
UPL	577.9	2.29%
TATAMOTORS	275.4	6.15%
IDFCFIRSTB	51.4	2.09%
PVR	1564.7	3.21%
IDEA	13.4	0.37%

Stocks to under perform

	Closing	% Change
ONGC	98.9	0.66%
PETRONET	249.7	-0.20%
IOC	98.7	-0.40%
MOTHERSUMI	158.9	-0.87%
POWERGRID	196.9	-1.92%

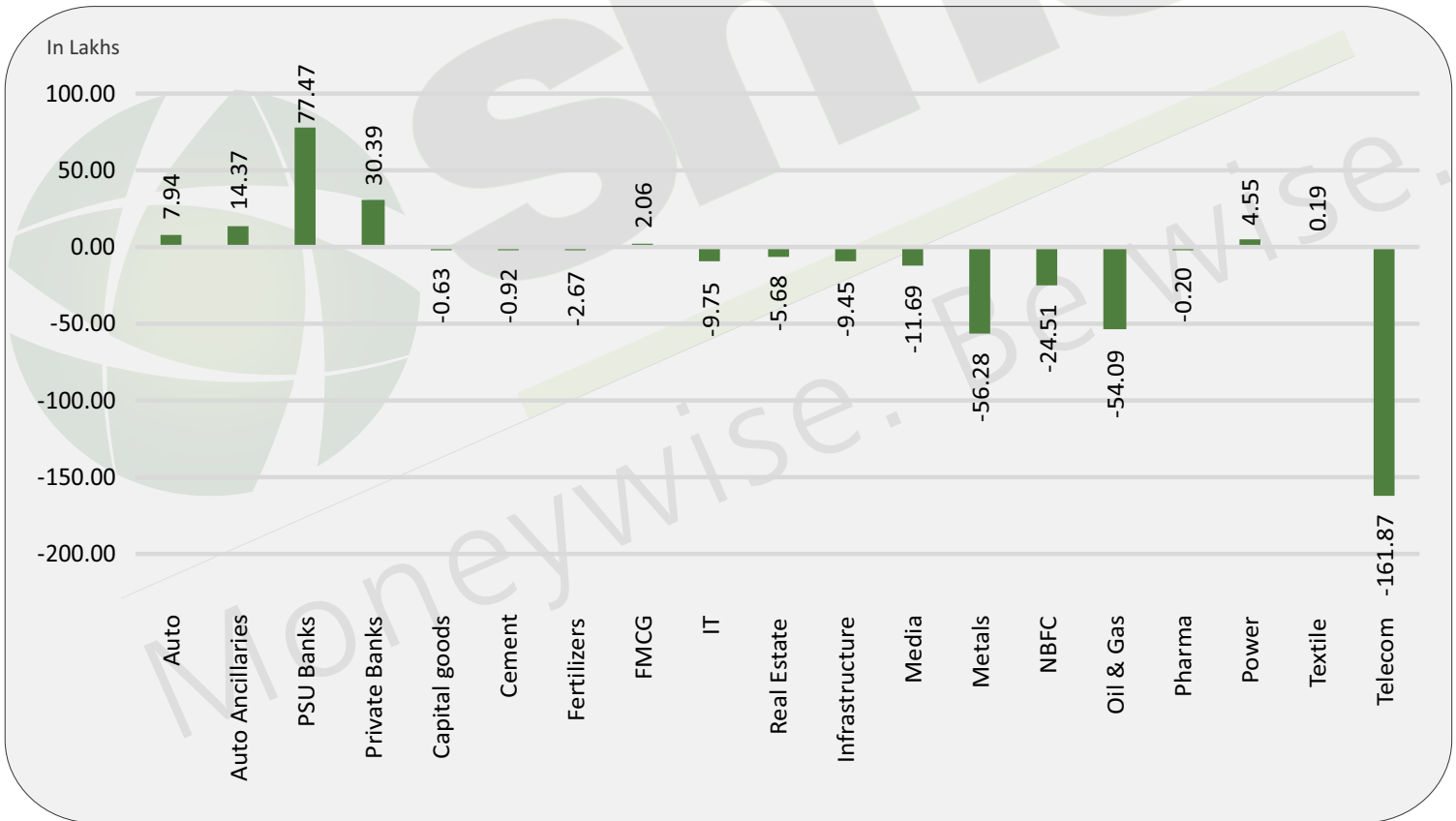
Sector overview

Scripts/Indexes	OI Change	Volume Change (%)	Price Change	Remark
Auto	793650	39.8%	2.4%	Long Buildup
Auto Ancillaries	1436750	72.2%	2.3%	Long Buildup
PSU Banks	7747300	24.8%	2.4%	Long Buildup
Private Banks	3038900	-10.2%	0.5%	Long Buildup
Capital goods	-63025	-26.5%	0.4%	Short Covering
Cement	-92400	-31.1%	0.1%	Short Covering
Fertilizers	-266800	-6.6%	1.8%	Short Covering
FMCG	206400	-2.5%	-0.5%	Short Buildup
IT	-974600	23.8%	2.6%	Short Covering
Real Estate	-567600	-55.6%	0.3%	Short Covering

Sector overview

Scripts/Indexes	OI Change	Volume Change (%)	Price Change	Remark
Infrastructure	-945000	-30.6%	-0.4%	Long Unwinding
Media	-1168500	33.2%	1.5%	Short Covering
Metals	-5627900	-19.6%	0.9%	Short Covering
NBFC	-2450850	-17.3%	-0.3%	Long Unwinding
Oil & Gas	-5409375	-17.6%	0.0%	Short Covering
Pharma	-20300	-12.4%	0.1%	Short Covering
Power	455000	-20.1%	-0.4%	Short Buildup
Textile	18940	45.5%	0.4%	Long Buildup
Telecom	-16187335	6.3%	0.4%	Short Covering

Change in sector open interest



E-mail: smc.care@smcindiaonline.com

Moneywise. Be wise.

Corporate Office:

11/6B, Shanti Chamber,
Pusa Road, New Delhi - 110005
Tel: +91-11-30111000
www.smcindiaonline.com

Mumbai Office:

Lotus Corporate Park, A Wing 401 / 402, 4th Floor,
Graham Firth Steel Compound, Off Western
Express Highway, Jay Coach Signal, Goreagon
(East) Mumbai - 400063
Tel: 91-22-67341600, Fax: 91-22-67341697

Kolkata Office:

18, Rabindra Sarani, Poddar Court, Gate No-4,
5th Floor, Kolkata - 700001
Tel.: 033 6612 7000/033 4058 7000
Fax: 033 6612 7004/033 4058 7004

SMC Global Securities Ltd. (hereinafter referred to as "SMC") is regulated by the Securities and Exchange Board of India ("SEBI") and is licensed to carry on the business of broking, depository services and related activities. SMC is a registered member of National Stock Exchange of India Limited, Bombay Stock Exchange Limited, MSEI (Metropolitan Stock Exchange of India Ltd) and M/s SMC Comtrade Ltd is a registered member of National Commodity and Derivative Exchange Limited and Multi Commodity Exchanges of India and other commodity exchanges in India. SMC is also registered as a Depository Participant with CDSL and NSDL. SMC's other associates are registered as Merchant Bankers, Portfolio Managers, NBFC with SEBI and Reserve Bank of India. It also has registration with AMFI as a Mutual Fund Distributor.

SMC is a SEBI registered Research Analyst having registration number INH100001849. SMC or its associates has not been debarred/ suspended by SEBI or any other regulatory authority for accessing /dealing in securities market. SMC or its associates or its Research Analyst or his relatives do not hold any financial interest in the subject company interest at the time of publication of this Report. SMC or its associates or its Research Analyst or his relatives do not hold any actual/beneficial ownership of more than 1% (one percent) in the subject company, at the end of the month immediately preceding the date of publication of this Report. SMC or its associates its Research Analyst or his relatives does not have any material conflict of interest at the time of publication of this Report.

SMC or its associates/analyst has not received any compensation from the subject company covered by the Research Analyst during the past twelve months. The subject company has not been a client of SMC during the past twelve months. SMC or its associates has not received any compensation or other benefits from the subject company covered by analyst or third party in connection with the present Research Report. The Research Analyst has not served as an officer, director or employee of the subject company covered by him/her and SMC has not been engaged in the market making activity for the subject company covered by the Research Analyst in this report.

The views expressed by the Research Analyst in this Report are based solely on information available publicly available/internal data/ other reliable sources believed to be true. SMC does not represent/ provide any warranty expressly or impliedly to the accuracy, contents or views expressed herein and investors are advised to independently evaluate the market conditions/risks involved before making any investment decision. The research analysts who have prepared this Report hereby certify that the views /opinions expressed in this Report are their personal independent views/opinions in respect of the subject company.

Disclaimer: This Research Report is for the personal information of the authorized recipient and doesn't construe to be any investment, legal or taxation advice to the investor. It is only for private circulation and use. The Research Report is based upon information that we consider reliable, but we do not represent that it is accurate or complete, and it should not be relied upon as such. No action is solicited on the basis of the contents of this Research Report. The Research Report should not be reproduced or redistributed to any other person(s) in any form without prior written permission of the SMC. The contents of this material are general and are neither comprehensive nor inclusive. Neither SMC nor any of its affiliates, associates, representatives, directors or employees shall be responsible for any loss or damage that may arise to any person due to any action taken on the basis of this Research Report. It does not constitute personal recommendations or take into account the particular investment objectives, financial situations or needs of an individual client or a corporate/s or any entity/s. All investments involve risk and past performance doesn't guarantee future results. The value of, and income from investments may vary because of the changes in the macro and micro factors given at a certain period of time. The person should use his/her own judgment while taking investment decisions. Please note that SMC its affiliates, Research Analyst, officers, directors, and employees, including persons involved in the preparation or issuance of this Research Report: (a) from time to time, may have long or short positions in, and buy or sell the securities thereof, of the subject company(ies) mentioned here in; or (b) be engaged in any other transaction involving such securities and earn brokerage or other compensation or act as a market maker in the financial instruments of the subject company(ies) discussed herein or may perform or seek to perform investment banking services for such company(ies) or act as advisor or lender/borrower to such subject company(ies); or (c) may have any other potential conflict of interest with respect to any recommendation and related information and opinions. All disputes shall be subject to the exclusive jurisdiction of Delhi High court.